

TOWN LOG



Town of Port McNeill
Phone 956-3111

1775 Grenville Place PO Box 728
web: www.portmcneill.ca

January 2012

Mayor and Council:

- Gerry Furney
- Shirley Ackland
- Grant Anderson
- Chris Sharpe
- Gaby Wickstrom

Animal Control Officer

Connie Brown
Contact # 250-230-4777
pmanimalcontrol@gmail.com

Meetings:

Council—

January 16th at 7:30 pm
in the Council Chambers

Harbour Committee—

January 3rd at 6:30 pm
at 1594 Beach Drive

Advisory Planning Committee— TBA



Port McNeill Museum

Closed for the months of
January, February
& March

For tours or rentals call
Margaret 956-4202 or
Rupa 956-4387

Office Hours

Open 9 am—5 pm
Monday thru Friday

Closed Monday January 2nd
for New Years Day

For Public Works
Emergencies after hours
call 956-4521 & Listen for the
numbers to call.



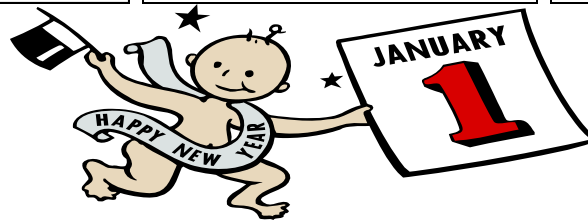
Water Pipeline

The replacement of the Town's
water mains continues. We thank
you for your patience during this
process, and apologize for any
inconvenience. There may be
times when you do not have
access to your driveway or off
street parking for a day or so.
We will continue to notify
affected residents in advance.

Port McNeill Public Works

Snow & Ice

The winter season is upon
us. Please park in your
driveways to allow for any
necessary ice/snow removal
on roadways. As the Town
must work to clear main
roads and emergency
channels first, your
patience, and assistance in
keeping the sidewalks clear
in front of your own home
is greatly appreciated.



NOTICE! Utility Customers

2012 Utility bills are mailed in early January. If you do not receive an invoice by mid-January, please notify the Town Office immediately.

The prompt payment discount of 5% applies throughout the months of January and February. Cheques may be postdated and mailed or brought in early to ensure receipt by the due date. The Town of Port McNeill will not be responsible if postdated cheques are deposited early. Please ensure your cheques are well marked as postdated.

Postmarks will not be considered as date of payment.

Payments must be received at the Town Office by 4:30 p.m. February 29, 2012 to qualify for the prompt payment discount.

Are you unable to pay your account in full by the end of February?

We will accept installment payments, for the full amount, up to October 31, 2012.

Utilities are the responsibility of the property owner and are not paid by Mortgage Companies.

Seniors & Disabled Persons:

If you are entitled to the additional Home Owner's Grant in the 2012 tax year, you are also entitled to an additional 25% off the basic utility account plus any appropriate prompt payment discount. Please provide proof of age or doctor's certificate. For the additional discount – full payment must be received by December 31, 2012 in order to qualify.

24 HOUR ROAD ADVISORY 1-800-661-2324 or the website "Drive BC"



**The Port McNeill
Figure Skating Club
Presents...**

Under the Big Top

Friday February 24th 7:00pm
Saturday February 25th 1:00pm
Saturday February 25th 7:00pm

**Chilton Regional Arena
Port McNeill**





**Tickets available at
the Port McNeill
Flower Shoppe**

Strong Start BC

Strong Start BC Early Learning Program

Place: Cheslakees Elementary School

Times: Monday, Wednesday & Friday – 9 am. – 12 noon
Tuesday & Thursday – 1:00 p.m. – 4:00 p.m.

Ages: This is a parent/child interactive early learning program and is open to children ages birth to pre-kindergarten. Their parents, guardian or caregiver must attend with the children. This program is funded by The Ministry of Education.

Strong Start Centre is now closed for the Seasonal Holiday.

Join us again on Tuesday, January 3, 2012, when we Discover Dinosaurs. Come out and join us for some fun and early learning!



Dry Grad 2012

The graduation class of 2012 is still collecting recyclables to raise funds for dry grad. You can drop them off at Island Foods Recycling Depot or the Liquor store until May 2012. Just mention that they are for the NISS dry grad.

Thank you for supporting the students.

FMI contact Elly Chester 250-956-2977



Port McNeill Hospital Auxiliary

Meeting times are on the 2nd Wednesday of each month from 1-3 pm. Meetings are now held in the Old School Room 4.

Come out and join us to greet old friends and meet new ones.

For more information contact Sue at 250-956-3504



Mount Waddington Health System Stabilization Local Working Group

The Local Working Group (LWG), in collaboration with the Vancouver Island Health Authority, has been established and is meeting regularly to develop a community-led plan aimed at strengthening and stabilizing health services in the Mt. Waddington region. The LWG anticipates presenting its recommendations to VIHA in March 2012.



For information on the LWG, including meeting agendas, minutes and membership, Mt. Waddington residents are invited to visit the VIHA website at: http://www.viha.ca/about_viha/community/mt_waddington.htm

For further information, please contact: Alison Mitchell, LWG Co-chair at 250.956.4461, Ext. 66257

Port McNeill Junior Canadian Rangers

The Port McNeill patrol of the Junior Canadian Rangers is looking for members of the community or local organizations that may have an interest or expertise in Ranger or Life skills that form a major part of the JCR program.

Such skills, with a focus on outdoor activities, include: radios, map work, compass/navigation, GPS, caving, first aid, SAR, driver education, hiking, boating/kayaking, wildlife, and pellet rifle, among many others.

If you think you may have such an area of interest that you could share on a training night/day, please contact:

ddrysdale@sd85.bc.ca



Food Safe Level I Course

Food Safe Level I will be offered at the Port McNeill Baptist Church located at 2501 Mine Road.

Course Date: Saturday January 14, 2012

Course Time: 9:00 am to 5:00 pm

Course Fee: \$64.00

For more information or to register call 250-956-4182



Top Island Econauts Dive Club

Yes, it's cold but it's so worth it!

We dive every weekend. All upcoming dives and events are listed under "events" at www.econauts.org.

We are a non-profit society aimed at facilitating environmentally sound and safe recreational diving on northern Vancouver Island.

To apply for membership contact: Jackie Hildering;

econauts@telus.net

Next meeting January 3rd, 2011.



www.virl.bc.ca

LIBRARY HOURS

Sunday & Monday	Closed
Tuesday and Wednesday	1-5 & 6-8
Thursday	10-12 & 1-5
Friday	Closed
Saturday	10-3

Story Time at the Library

Thursdays

9:30-10:00 am

January 12th, 19th & 26th





Port McNeill & District Chamber of Commerce and Visitor Centre

1594 Beach Drive

Looking forward to exploring “all the possibilities” for Port McNeill & District in the new year!

2012 Chamber Opportunities: The Chamber of Commerce is governed by a volunteer Board of Directors and full membership gives you a vote for the new Board of Directors. The Port McNeill & District Chamber of Commerce is currently seeking nominations for the Executive & Board of Directors for the Year 2012.

There are eleven (11) elected positions: President, Vice-President, Secretary, Treasurer, and eight (8) Directors. Think about it!

Mount Waddington (North Island) Coordinated Workforce Initiative and the **Port McNeill & District Chamber of Commerce** will be conducting a series of “roundtable” discussions. Topic for discussion will be “Attraction, Recruitment and Retention” for our local industries and business. Please keep an eye out for dates and times.

Chamber of Commerce 2012 Membership & Renewal: For all Chamber Members, your 2012 Membership Renewals have been delivered. Please do not hesitate to contact the Chamber office if you have not received this package and are interested! If you are not yet a Member and would like to know more about the benefits of being a member of the Port McNeill & District Chamber of Commerce please contact the Chamber office for more information.

Polar Bear Swim 2012!: Dip a toe or jump right in! This event is sponsored by the Port McNeill Rotary Club & the Port McNeill Chamber of Commerce. Prizes will be awarded for: Oldest Swimmer, Youngest Swimmer, & Best Dressed! Many thanks for this incredible time to the Port McNeill Rotary Club and the Port McNeill Coast Guard Auxiliary. Bonfire & Hot Chocolate for everyone!! Come join the fun! January 1st @ 12 noon at the Sandy Beach next to the Boat Launch.

Congratulations to all of the Christmas Light participants:

Commercial: Top Honours to Timberland Sports, Honourable mentions to North Island Camera, Port McNeill Flower Shoppe and Positive Connections (Pioneer Mall Display).

Residential: Top Marks to Williams Household, Hats off to Dawn Harilstad and Well done to the Iseppi's

Best Street: 2800-2900 Block of Woodland Crescent.

Chilton Regional Arena Programs & Services 2011/2012 Winter Season

SPECIAL EVENTS

Minor Hockey Tournaments

Novice – November 5th. & 6th.

Pee Wee – December 10th & 11th.

Atom – January, 20th, 21st & 22nd.

Watch our Marquee for upcoming Rep. Hockey Games

Bantam – November 19th. & 20th.

Midget – January 13th, 14th & 15th.

Peanut Jamboree – March 10th & 11th.

Port McNeill Figure Skating Club

Skate-a-thon – December 2nd.

Carnival – February 24th & 25th. Show times Friday - 7:00 p.m. and Saturday - 1:00 & 7:00 p.m.

Port McNeill Women's Downpour Hockey Tournament – February 17th, 18th & 19th.

PUBLIC PROGRAMS

Public Skating for all ages – Sunday 1:00 – 2:30 p.m. & Friday 7:30 – 9:00 p.m.

(last regular Public Skate will be December 9th. until after the Christmas holidays)

Adults (19 – 65 yrs.) - \$ 4.00 each

Teens (13 –and including 18 yrs.) - \$3.25 each

Children & Seniors (4 – and including 12 yrs. and Over 65 yrs.) - \$2.75 each

Sponsored Public Skating begins Friday December 16th.

Parents & Tots – Tuesday & Thursday – 11:00 a.m. – 12:00 noon

Adults - \$2.75 each

Tots - \$1.50 each

N. H. L. (noon hockey league) – Tuesday & Thursday – 12:00 – 1:00 p.m.

Adults (13 yrs. and over) - \$4.00 each

Children (up to 13 yrs.) - \$3.00 each

*** The above prices have 12% H.S.T. included ***

FOR FACILITY RENTALS AND ANY OTHER QUESTIONS CALL 250-956-3522 OR EMAIL “Kathy.Wood@rdmw.bc.ca”



Port McNeill Family Centre

Room #6 Old School

Call/Fax 956-2273

Email:

pmfamilycentre@telus.net

Coordinator: Linda Walton

COMMUNITY READERS

Interested in reading one on one with children? We are looking for volunteers!!!

For more information, please call Cheryl Verbrugge 956-4766 or Linda Walton 902-9416.

RED CROSS BABYSITTING COURSE:

Students must be 11 yrs+. Please call to be added to the next course! Date TBA



JR.CHEFS – call for interest:

Children aged 6-12 will enjoy learning how to prepare & cook food using various methods, plus clean up after themselves! Held after school 4:00-5:30 pm for 4 weeks.

New class starting January 17th. Please call us 250-956-2273 to register your child.



TODDLER TIME DROP-IN:

Tuesday mornings. 9:30-11:00am In the gym.

Facilitator: Cheryl Verbrugge.

Program content geared towards children between the ages of 1-3.

All children under the age of 6yrs are still welcome.

Parents & caregivers are to accompany children.

*Cost \$1.00 per child (over 12 months) per visit. (No longer by donation!)

PROMISING BABIES:

Tuesdays 11am-12:30pm in Room #6 at the Old School.

Contact Chris Koop 250-956-3134 for more info.

Geared towards expecting parents, and parents with babies 0-1 yrs.



PARENTS/CAREGIVERS & TOTS MORNINGS:

Wednesdays & Thursdays

9:30-11:00am. Old School gym.

Call 250-956-2273 for more info.

For parents & caregivers with children 0-5yrs. Play, socialize & get out of the house! Facilitators: Linda Walton & Cheryl Verbrugge.

*Cost \$1.00 per child (over 12 months) per visit. (No longer by donation!)

TEEN CENTRE: Friday Nights,

Time: 6-11pm, Ages: 13-18yrs.

Cost: Free!

Food & movie provided each evening.

Volunteers always needed!



Miscellaneous Groups & Associations

Happy Gang

Thursdays at 1:00 at the St. John Gualbert Church hall. A great bunch of people with diverse interests who get together once a week. Our only mandate is to be accepting of all people. Call Karen Watkins (FMI) for more information 956-3563.

Men's Adult Soccer

Each Tuesday & Thursday at Sunset School Gym from 6:00 to 8:00 pm. FMI Vjeko 902-9522

Mixed Recreational Volleyball

Each Thursday 8:00—9:30 pm at NISS gym. FMI Kristen 956-4894

Cat's Meow Society

Cell Phone 250-230-3254

PITCH-IN CANADA

Vancouver Pitch-In Canada is Celebrating its 45th Annual Pitch-In April 23rd—30th, 2012

To be a part of this historic & memorable anniversary register after January 15th, 2012 online at: "www.pitch-in.ca"

Come celebrate and help clean up your community! In 2011 we picked up apx 4.5 million pounds of waste How much will you pick up this year?

Churches in Port McNeill

Baptist Church	956-4737
Church of Jesus Christ of Latter Day Saints	956-2254
Full Gospel Church	956-4741
Jehovah's Witness	956-4246
St. John Gualbert Anglican United Church	956-3533
St. Mary's Catholic Community Church	956-3909

Visitor Information Centre

Port McNeill Where the Welcome Never Stops

1594 Beach Drive



December Hours: Monday – Friday 9:00am – 5:00pm (Hours are subject to change without notice)

Closed Monday, January 2nd, 2012
Re-opening Tuesday, January 3rd, 2012.



Hall Rentals	
St. John Gualbert Hall	956-3533
Lions Hall	956-4296
Old School Rec Centre	956-3111
Community Hall	956-3111
Guide/Scout Hall	956-4379
Curling Club	956-4898
Legion Hall	956-4551
Museum Room	956-4202
Regional Arena	956-3522

Regular Meetings & Activities	
<u>Alcoholics Anonymous</u>	
Mondays & Fridays 8:00 to 9:00 Room 3, Old School Recreation Centre	
<u>Narcotics Anonymous</u>	
Wednesdays and Saturdays 7:30 to 8:30 Room 3, Old School Recreation Centre	
<u>Alanon Meetings</u>	
Wednesdays 7:30 St. Mary's Church	
<u>Recycling Options:</u>	
- Second Look Thrift Shop 250-956-3833	
- 7 mile Landfill & Recycling 250-949-1681	
- Port McNeill Recycling Depot Open Mondays Noon to 7:00 pm and Saturdays Noon to 5:00 250-230-0568	

Tide Guide also found at www.waterlevels.gc.ca choose "Data Available" for a pdf file.

Day	Time	Feet	Metres	jour	heure	pieds	mètres	Day	Time	Feet	Metres	jour	heure	pieds	mètres
1	0639	13.8	4.2	9	0145	13.8	4.2	17	0025	6.6	2.0	25	0248	15.1	4.6
	1334	6.9	2.1		0647	7.2	2.2		0708	15.1	4.6		0829	5.6	1.7
SU	1850	10.8	3.3	MO	1244	16.1	4.9	TU	1429	4.9	1.5	WE	1413	15.4	4.7
DI				LU	1955	2.0	0.6	MA	2039	11.2	3.4	ME	2056	2.6	0.8
2	0036	7.2	2.2	10	0218	14.1	4.3	18	0137	7.5	2.3	26	0320	15.1	4.6
	0729	13.8	4.2		0728	6.9	2.1		0813	15.1	4.6		0911	5.6	1.7
MO	1444	6.2	1.9	TU	1325	16.1	4.9	WE	1541	3.9	1.2	TH	1453	14.8	4.5
LU	2029	10.5	3.2	MA	2028	2.0	0.6	ME	2213	11.8	3.6	JE	2124	3.6	1.1
3	0136	8.2	2.5	11	0252	14.4	4.4	19	0256	7.9	2.4	27	0351	14.8	4.5
	0822	13.8	4.2		0812	6.6	2.0		0917	15.4	4.7		0954	5.9	1.8
TU	1546	5.6	1.7	WE	1407	15.7	4.8	TH	1646	3.3	1.0	FR	1533	13.8	4.2
MA	2211	10.8	3.3	ME	2059	2.3	0.7	JE	2320	12.5	3.8	VE	2150	4.6	1.4
4	0242	8.5	2.6	12	0326	14.8	4.5	20	0411	7.9	2.4	28	0421	14.4	4.4
	0912	14.1	4.3		0858	6.2	1.9		1017	15.7	4.8		1039	5.9	1.8
WE	1640	4.9	1.5	TH	1451	15.1	4.6	FR	1742	2.3	0.7	SA	1615	12.8	3.9
ME	2315	11.5	3.5	JE	2132	2.6	0.8	VE				SA	2218	5.6	1.7
5	0343	8.5	2.6	13	0401	14.8	4.5	21	0012	13.5	4.1	29	0454	14.1	4.3
	0959	14.4	4.4		0949	5.9	1.8		0516	7.2	2.2		1131	6.2	1.9
TH	1727	4.3	1.3	FR	1538	14.4	4.4	SA	1112	16.4	5.0	SU	1702	11.8	3.6
JE	2359	12.1	3.7	VE	2206	3.6	1.1	SA	1831	1.6	0.5	DI	2251	6.6	2.0
6	0436	8.5	2.6	14	0439	15.1	4.6	22	0057	14.1	4.3	30	0532	13.8	4.2
	1043	15.1	4.6		1047	5.9	1.8		0612	6.6	2.0		1232	6.6	2.0
FR	1808	3.6	1.1	SA	1631	13.5	4.1	SU	1203	16.4	5.0	MO	1801	10.8	3.3
VE				SA	2243	4.6	1.4	DI	1914	1.6	0.5	LU	2332	7.5	2.3
7	0036	12.8	3.9	15	0520	15.1	4.6	23	0137	14.8	4.5	31	0620	13.5	4.1
	0523	8.2	2.5		1154	5.6	1.7		0701	6.2	1.9		1342	6.6	2.0
SA	1124	15.4	4.7	SU	1732	12.5	3.8	MO	1249	16.4	5.0	TU	1928	10.2	3.1
SA	1846	3.0	0.9	DI	2328	5.6	1.7	LU	1952	1.6	0.5	MA			
8	0111	13.1	4.0	16	0609	15.1	4.6	24	0214	15.1	4.6				
	0606	7.5	2.3		1311	5.2	1.6		0746	5.9	1.8				
SU	1204	15.7	4.8	MO	1853	11.5	3.5	TU	1332	16.1	4.9				
DI	1921	2.3	0.7	LU				MA	2026	2.0	0.6				

January Tide Guide

Young Naturalist Club

Join the Young Naturalists Club of Northern Vancouver Island for great family, nature adventures.

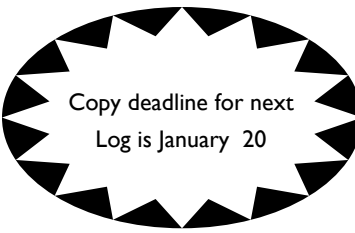
For \$25/family, you enjoy:

Access to the monthly "Explorer Days" – a family nature event, a welcome pack with a participation passport, a bird and an insect ID card, a bird checklist, a membership card and a magnifying glass, a wonderful natural history magazine 4 times a year called "Nature Wild", the possibility of the children earning the recognition of awards for environmental action and awareness.

Note: Children to be at least 5 years-old.

For details of the organization, see

Log Editor can be contacted at 956-3111 or reception.portmcneill@telus.net



Fire Prevention Message

A message from Fire Prevention Canada and your local fire department:

- △ A fire is no fun... but practicing fire safety can be. Plan two escape routes from every room and practice home fire drills.
- △ Many fires are caused by carelessness in the kitchen. Never leave cooking appliances unattended when in use.
- △ Practice Fire Safety and Prevention: If a fire happens in your home, do you know what to do?
- △ Contact your local fire department for instruction.

